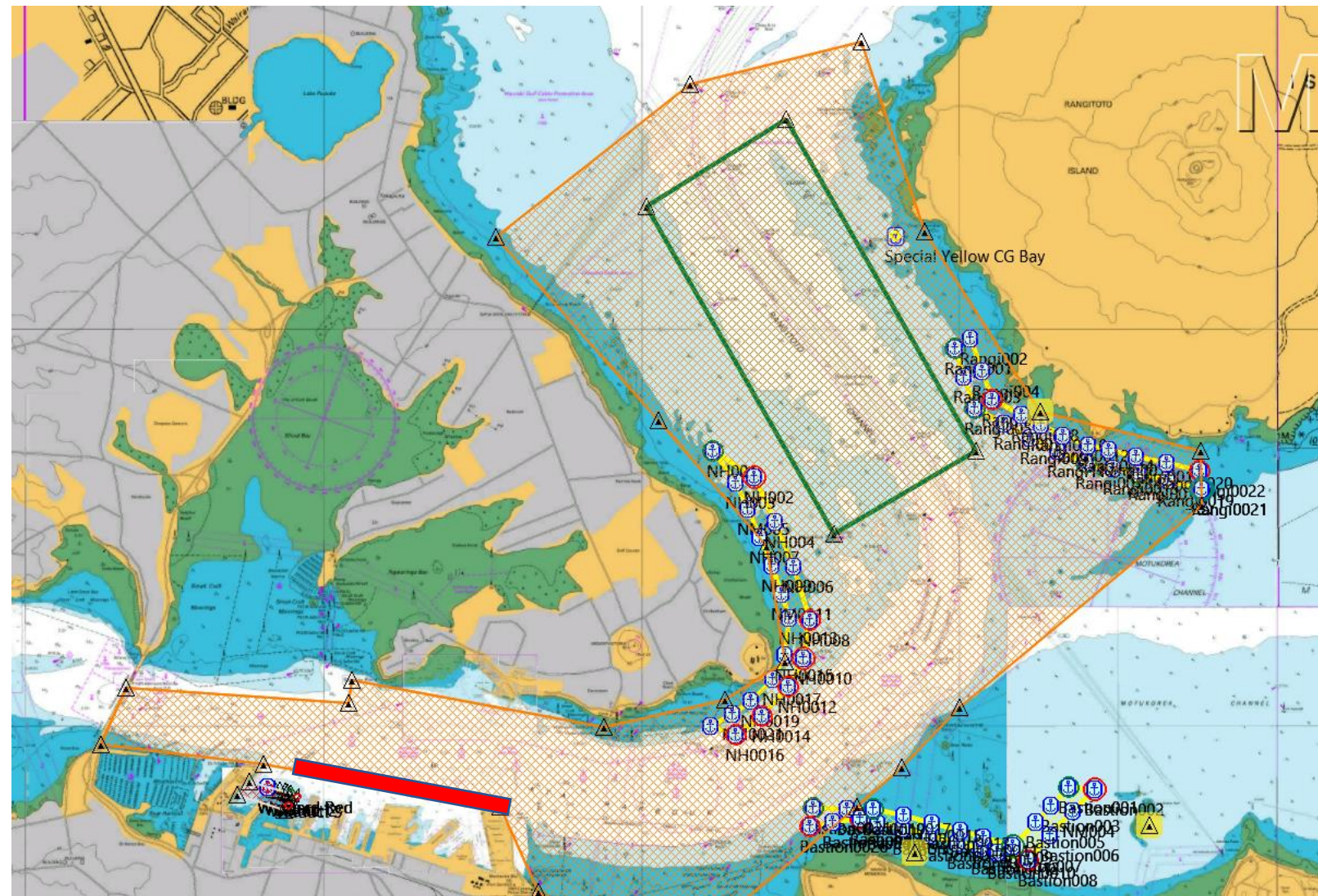


Course Area B - 5 Knot Restriction

NOT For Navigation



- On any day Course Area B is being used for racing, the 5 Knot Restriction will apply only to the “Orange” hashed area as indicated in this chart extract.
- All vessels should keep to the north of the area indicated by the RED shape to enable ferries to navigate safely when the speed restrictions apply
- Users of buoyed transit lanes off North head, South of Bastion reefs and off Rangitoto Island are reminded they are not permitted to stop or reverse course in the lane and must keep to starboard at all times.

General:

- Vessels are reminded of the risks to craft by generated wake.
- The event strongly discourages the use of non-powered craft in the indicated speed restriction zones
- Sailing Vessels are not permitted to operate in the speed restricted zone as indicated when in force with sails hoisted.
- Speed restrictions will generally apply from 1pm (13:00 hours) until 7pm (19:00) hours each race day unless lifted earlier
- Lifting of event speed restrictions will be announced on Marine VHF channels 12 and 16